

**FAITHWORKS**  
**September 24th, 2017**  
**Pentecost 16**

**JEFFREY SILVERNAIL ~ Pastor**  
[pastorjeff@poplutheranchurch.org](mailto:pastorjeff@poplutheranchurch.org)  
**AMBER WAUGAMAN~ Pastor**  
[pastoramber@poplutheranchurch.org](mailto:pastoramber@poplutheranchurch.org)  
**MELANIE EDWARDS~ Parish Administrator**  
[office@poplutheranchurch.org](mailto:office@poplutheranchurch.org)



**Prince of Peace Lutheran Church**  
**4 Northcrest Drive**  
**Clifton Park, NY 12065**  
**WORSHIP SERVICES: 8:00 & 10:00 a.m.( Summer hours.)**  
Phone: (518) 371-2226; Fax: (518) 383-3820  
A Pastor or Deacon is always on call.  
e-mail: [office@poplutheranchurch.org](mailto:office@poplutheranchurch.org)  
Faith Works articles (**DEADLINE TUESDAY**):  
[faithworks@poplutheranchurch.org](mailto:faithworks@poplutheranchurch.org)  
Check our church website for updated information and sermons online:  
<http://www.poplutheranchurch.org>  
Check us out on Facebook! Search for Prince of Peace Lutheran Church, Clifton Park  
Hearing assistance devices are available.  
**OFFICE HOURS: Mon. – Thursday, 9a.m. -4 p.m.**  
**Friday 9a.m-12p.m. ~ Office closed on Fridays in July & August.**

**ORGANIST/CHOIR DIRECTOR:** Jim Roberts, [jrobert5@nycap.rr.com](mailto:jrobert5@nycap.rr.com)  
**CONTEMPORARY WORSHIP LEADER:** Anneliese Kellogg [kelloag@plu.edu](mailto:kelloag@plu.edu) 253-905-0681  
**THE NURSERY SCHOOL at PRINCE OF PEACE** (Instructional Programs for ages 3 & 4) ~ 383-6093,  
([Thenurseryschool@poplutheranchurch.org](mailto:Thenurseryschool@poplutheranchurch.org)) Director: Kim Flood, Administrator: Erica Roberts.  
**DEACONS:** Jim Netzer; Nancy Hoelzer; Robin Domm; Donna Turner, JoAnn Koenig-Hagymas , Diana Foote  
**CHURCH COUNCIL:** Matt Petersen, President ((970-472-5877), Lisa Haase, Vice President, Tom Miller, Secretary, Pastor Jeff Silvernail, Pastor Amber Waugaman, Bella Anderson, Eileen Bryant, Robin Domm, Diana Foote, Jim Galarneau, Glenn Gerber, Randy Johnson, Susan Zappen.  
**FINANCIAL OFFICERS:** Wane Petterson, Treasurer (383-6290); JoAnn Koenig-Hagymas, Financial Secretary (399-1650)  
**SUNDAY SCHOOL (9:15 –10:15 a.m., Sept. - June) ~ Coordinator:** Cheryl Fiore (274-7588)  
[sundayschoolatPOP@gmail.com](mailto:sundayschoolatPOP@gmail.com) **CONNECTIONS NEWSLETTER:** Jim Roberts, editor ([newsletter@poplutheranchurch.org](mailto:newsletter@poplutheranchurch.org))  
Copy deadline: 15<sup>th</sup> of each month.

**Welcome to Worship! We're glad you're here!**  
**PLEASE SILENCE** electronic devices **BEFORE** entering the sanctuary for worship. Thank you!



Parents, the sound of your children is one of the most beautiful sounds in the world. It is a sound that glorifies God in the sanctuary and joins with the praise of all creation. Children are always welcome to stay in the worship service. If however, you need a break, we offer a large, staffed nursery located off the hallway adjacent to the Welcome area.

**\*FREE PANCAKE BREAKFAST:**  
Everyone is invited to "**Brendan's Breakfast- 10/8/2017**  
Pancakes Chocolate chip pancakes, gluten free pancakes, , bacon, and beverages will be served from 9:00 am to 11:00 am. As usual, breakfast is free and donations can be made to go towards the **Senior High Camp scholarship Fund**. The breakfast is in honor of Brendan Patterson, grandson of Pastor Chuck and Mary Schwartz who died in June of

*\*Indicates new or revised information this week*

2016. The Schwartz family will be preparing and serving the meal.  
**REACH-- Relevant Education for All CHristians. 9:30a.m.- 10:15a.m. Fellowship Hall- Today: Always Reforming** – led by Pastor Amber. Martin Luther began, but did not end the reformation of the church. We are still reforming today. What does that look like? How do we continue to reform well? What does it mean for Prince of Peace? Today we

will begin a conversation that will continue throughout the year as we look at diving into our purpose statement and planning for the future of ministry in Clifton Park and at Prince of Peace.

**QUIET CHAPEL** Rm 16 will be used as a Quiet Chapel. It is meant to be a place for quiet contemplation, meditation and prayer. It will be available Sunday mornings from 7:30a.m. to approximately 12:30 p.m.

## **INTERESTED IN JOINING THE PRINCE OF PEACE FAMILY?**

We have a very flexible process built around your schedule. See Pastor Jeff or Pastor Amber for more details or to get started.

## **DONATIONS FOR HURRICANE HARVEY/ IRMA**

Three ways to donate -You can donate on our website by clicking either tabs below on the home page or envelope on the table in the Welcome area.



Lutheran Disaster Response  
Evangelical Lutheran Church in America  
God's work, Our hands.

Donate



## **THE NURSERY SCHOOL AT PRINCE OF PEACE OPENINGS ARE STILL AVAILABLE.**

You can contact contact Director Kim Flood by leaving a message at the school number 518 383-6093. Or you may send a message via e-mail to [thenurseryschool@poplutheranurch.org](mailto:thenurseryschool@poplutheranurch.org).



## **MINISTRY: THE POP FIX-IT CREW**

Serving Jesus by helping people in our community by doing **small repair, fix-it or yard work jobs** for those who lack the skills or resources to handle the issues themselves. We are looking for people who are willing to use their time and skills to occasionally help those in our congregation and community who may need a hand with a home project. See Pastor Jeff for more information. **We are also looking for projects. Contact the church office or Pastor Jeff.**

## **YOUTH NEWS**

**CLOWN TROUPE** Clown rehearsal, 7-9pm on Sunday evenings unless otherwise noted. **Clown service: September 24<sup>th</sup> (UMC)**

## **SENIOR HIGH YOUTH**

We have planned at least one youth event each month through the school year. These events will fall on a variety of different days and be fun activities or service opportunities. **September Activity : Laser Tag/ Bowling** We will determine what everyone would like to do. Look for more information to come in your email or text.

**BIRTHDAYS: Today:** Christine Lenahan, Mary Durkin, Evan Rurycz; **25<sup>th</sup>** Angela Wood **26<sup>th</sup>** Nancy Burke, Kurt Bennett **27<sup>th</sup>** Teresa Jalonack **28<sup>th</sup>** Cameron Foote, Sarah Prybylowski, Anne Reese **29<sup>th</sup>** Mary Ann Anderson, **30<sup>th</sup>** Renee Panarese.

**QR CODE** for our new donation page. Also, located in our bulletin.



## **How to use the QR Code for making a donation:**

1. You need a QR reader app on your phone. These are available free through the various app stores.
2. Open your app. It will look like you are taking a picture. When your phone beeps it will ask if you want to go to the website.
3. Hit yes. The website will ask you to log in or create a profile. Follow the directions.

For future use, once you have a profile you will be able to make your contribution in a few seconds

## **COMMUNITY NEWS**

**Please see the community bulletin board (adjacent hallway from the welcome area) for more current events.**

## **\* VOLUNTEER OPPORTUNITY**

Care Links' goal is to help older adults remain in their homes as long as possible. To accomplish this there is a need to find volunteers. Each fall we look forward to finding new recruits. It is up to you to set the day and time to fit your schedule. Services include friendly visit, respite, grocery shopping, transportation, chores and handy- helping possible. To find out more call 518-399-3262. Thank you for your support to help us improve the lives of the aging population. Carole Beauregard Program Director.

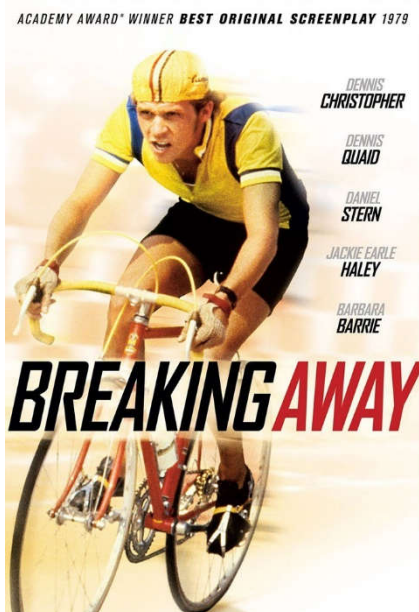
## **\*SICM'S EMPTY BOWLS**

**PROJECT TODAY** Sunday, September 24<sup>th</sup> 1-4pm Doubletree Hotel by Hilton 100 Nott Terrace, Schenectady, NY 12308 \$25.00 per person includes meal and pottery bowl to take home. variety of soups and breads, soup bowl to take home, pick-a-prize activities short informational program. To learn more about SICM [www.sicm.us](http://www.sicm.us). Walk-ins Welcome!!!

# Reel to Real:

## A Movie & Faith Discussion Group

Jesus taught with parables, stories that were relatable, memorable, and make a point. The parables of our age are often movies. Our aim is to watch good movies and have great discussions where story and faith intersect.



Dave (Dennis Christopher) and his working-class friends Cyril (Daniel Stern), Moocher (Jackie Earle Haley) and Mike (Dennis Quaid) spend their post-high school days in Bloomington, Indiana, sparring with snooty students from the local university, chasing girls and--in Dave's case--dreaming of competitive bicycle racing. The four friends face opposition from all corners as they decide to make Dave's dreams come true in the university's annual bicycle endurance race.

**Coming Soon!**

**Breaking Away**

Tuesday September 26<sup>th</sup>, 6:30 pm. Shenendehowa Village

# ***The Heart of Reformation Teaching:***

## ***Unpacking the Augsburg Confession***



- **What do Lutherans really believe?**
- **Let's dig into the heart of it!**

**As always we will have fun, food and great discussions!**

**Mondays at 2:00 pm  
Beginning September 18<sup>th</sup>**

**Prince of Peace, Room 20**

# The Grace Endowment Fund for Prince of Peace Church



*Harvest the Fruit  
from the seeds  
that were sown*

## **For more information:**

Visit the POP website at  
[www.poplutheranchurch.org](http://www.poplutheranchurch.org)

Email your questions to  
[endowment@poplutheranchurch.org](mailto:endowment@poplutheranchurch.org)

This fund was originally created by Grace Lutheran Church and transferred to Prince of Peace as a result of the union with Grace. Prince of Peace members as well as anyone from the community can submit grant proposals requesting funding from this endowment.

This endowment was created to provide grants to efforts which strengthen or provide innovation in the areas of worship life, spiritual experience, and social action. Grants can also support ministries that address issues of health, housing, hunger and spiritual education in the local, national, and world-wide community.

**The submittal period for Fall 2017 grant application forms will be opening on August 27<sup>th</sup> and applications must be submitted by September 24<sup>th</sup>.**

Forms to apply for a grant are available on the POP website and in the rack in the Welcome Area. This form contains the instructions for submittal of the grant application.